



We can provide interpreters for a variety of languages, information in larger print or other formats (e.g. audio) - please call us on 01932 723553.

To use the Text Relay service, prefix all numbers with 18001.

اگر نیاز به ترجمہ دارید، لطفاً با شماره 01932 723553 تماس بگیرید۔

ਜੇ ਤੁਹਾਨੂੰ ਤਰਜਮੇ ਦੀ ਲੋੜ ਹੈ ਤਾਂ ਕਿਰਪਾ ਕਰਕੇ ਇਸ ਨੰਬਰ ਤੇ ਫੋਨ ਕਰੋ: 01932 723553

اگر آپ اس کا اردو زبان میں ترجمہ چاہتے ہیں، تو براہ کرم اس فون نمبر 01932 723553 پر رابطہ کریں

Se precisa de uma tradução por favor contacte: 01932 723553

আপনার অনুবাদের দরকার হলে এখানে যোগাযোগ করুন : 01932 723553

यदि आपको अनुवाद की ज़रूरत है तो कृपया इस नंबर पर फोन करें: 01932 723553

Jeżeli chcemy, aby te informacje w innym języku, proszę zadzwonić 01932 723553

Ashford Hospital
London Road
Ashford, Middlesex
TW15 3AA
Tel: **01784 884488**

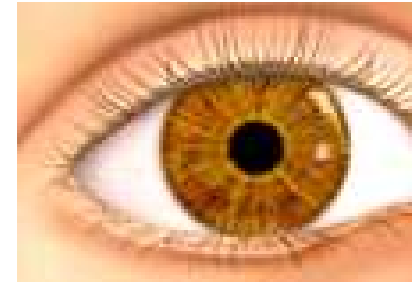
St. Peter's Hospital
Guildford Road
Chertsey, Surrey
KT16 0PZ.
Tel: **01932 872000**

Website: www.ashfordstpeters.nhs.uk

Atropine Occlusion

Information for Parents

Ophthalmology Department



Undilated pupil



Dilated pupil

Further Information

We endeavour to provide an excellent service at all times, but should you have any concerns please, in the first instance, raise these with the Matron, Senior Nurse or Manager on duty.

If they cannot resolve your concern, please contact our Patient Experience Team on 01932 723553 or email asp-tr.patient.advice@nhs.net. If you remain concerned, the team can also advise upon how to make a formal complaint.

Author: Judith Ackers

Department: Ophthalmology

Version: 4

Published: Jul 2018

Review: Jul 2021

- If your child accidentally swallows Atropine, encourage them to be sick and contact your nearest casualty department or GP.

FOR FURTHER INFORMATION, PLEASE CONTACT

Orthoptic Department

Ashford Hospital: 01784 884133

St. Peters Hospital: 01932 872146

Heart of Hounslow: 0208 630 1654

Woking Community Hospital: 01483 846327

Atropine Occlusion

Child's Name:

Put one drop in eye.

Once on Saturday and once on Sunday every week during treatment. (Weekends only).

WHAT IS ATROPINE OCCLUSION TREATMENT?

Your child has been diagnosed with an eye condition called Amblyopia (reduced vision in one eye, sometimes known as a lazy eye).

Atropine eye drops may be used as an alternative to patching treatment. The main aim of Atropine occlusion is to temporarily blur the vision in the good eye (when viewing close objects) to promote the vision in the weaker eye.

WHAT ARE THE EFFECTS OF ATROPINE?

Atropine has two effects when instilled in the eye:

- Dilates the pupil (makes the black part of the eye larger).
- Stops the eye from focusing properly which blurs the child's near (close up) vision.

HOW DOES ATROPINE WORK?

Atropine is a long acting eye drop that blurs the near vision in the good eye by preventing the eye from focusing. This encourages the weaker eye to be used for all near tasks such as reading, writing and computer work. The vision in the weaker eye usually improves over a period of time.

HOW OFTEN SHOULD THE DROPS BE INSTILLED?

One drop in the good eye on both Saturday and Sunday of every week of treatment.

HOW SHOULD I INSTILL THE DROPS?

1. Wash your hands before and after instilling the drops.
2. Your child can lie on their back or sit with their head tipped back.
3. Gently pull down the lower eyelid of the **good eye** with your finger.
4. Place one drop of Atropine into the space between the eyeball and the lower eyelid.
5. Gently press on the inner corner of the lower eyelid for one minute. This helps to prevent any drops from running into the nose.
6. If your child gets very distressed it may be easier to put the drop in when he / she is asleep.
7. Continue instilling as instructed until your next appointment.
8. If you run out of Atropine eye drops contact the eye department.

HOW LONG DO THE EFFECTS OF ATROPINE LAST?

Atropine will cause blurred vision which may last up to 7 days or more after using it. The pupil may also remain dilated for up to 14 days after the last dose.

WHAT ARE THE SIDE EFFECTS?

- Do not use Atropine if your child suffers from heart problems or has a high fever.
- The dilated eye will be sensitive to light so a sun hat may help on sunny days.
- Your child may feel a little discomfort when the drop is instilled.
- Tell your ophthalmologist if your child is taking any other medication.
- If your child becomes hot, irritable and complains of a sore throat or develops any of the following symptoms: a rash, headaches, nausea or vomiting, **stop using the Atropine and seek medical advice immediately.**

IMPORTANT

- Do not use Atropine beyond the expiry date.
- Store the Atropine out of reach of children and at room temperature.
- It is very important that you keep your follow up appointments to monitor the effect of the Atropine occlusion on vision.