



We can provide interpreters for a variety of languages, information in larger print or other formats (e.g. audio) - please call us on 01932 723553.

You can use Text Relay to turn telephone communications into text.
Use the Relay UK app on your phone, tablet or PC.
You can also use Relay UK via Minicom or Uniphone.

اگر نیاز به ترجمہ دارید، لطفاً با شماره 01932 723553 تماس بگیرید۔

ਜੇ ਤੁਹਾਨੂੰ ਤਰਜਮੇ ਦੀ ਲੋੜ ਹੈ ਤਾਂ ਕਿਰਪਾ ਕਰਕੇ ਇਸ ਨੰਬਰ 'ਤੇ فون ਕਰੋ: 01932 723553

اگر آپ اس کا اردو زبان میں ترجمہ چاہتے ہیں، تو براہ کرم اس فون نمبر 01932 723553 پر رابطہ کریں

Se precisa de uma tradução por favor contacte: 01932 723553

আপনার অনুবাদের দরকার হলে এখানে যোগাযোগ করুন : 01932 723553

यदि आपको अनुवाद की ज़रूरत है तो कृपया इस नंबर पर फोन करें: 01932 723553

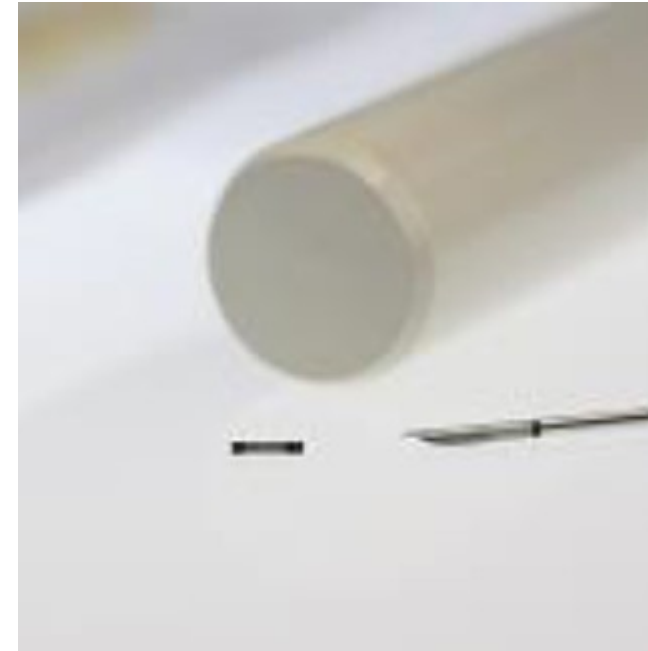
Jeżeli chcemy, aby te informacje w innym języku, proszę zadzwonić 01932 723553

Ashford Hospital
London Road
Ashford, Middlesex
TW15 3AA
Tel: **01784 884488**

St. Peter's Hospital
Guildford Road
Chertsey, Surrey
KT16 0PZ.
Tel: **01932 872000**

Website: www.ashfordstpeters.nhs.uk

Magseed Marker Insertion Imaging Department



What is Magseed?

The Magseed is a metallic seed, smaller than a grain of rice and measures 5 x 1 mm. It is inserted before your breast surgery into the abnormal breast tissue that is too small for the surgeon to feel. The Magseed can be inserted at any time before your operation. The seed is not radioactive and is also safe to be used in MRI scanning if you should need one before your planned breast surgery.

How is Magseed inserted?

The Magseed is placed into your breast by a radiologist using an ultrasound or mammographic guidance. You will be given local anesthetics beforehand to numb the area. A very small needle is used to place it into the center of the abnormal area.

The procedure takes about 15-30 minutes depending on the complexity of each case. Afterwards, a mammogram is taken to check the Magseed is in a good position.

You can carry on your usual activities until it is time for your surgery.

How is a Magseed removed?

On the day of your surgery, you will be directed by your breast team where to attend.

At surgery, you will be fully anaesthetised. As the Magseed is made of magnetisable surgical steel, the surgeon uses a handheld probe called Sentimag to find the location of the Magseed in the breast. The seed will be removed with the breast tissue during surgery.

Are there any risks?

The needle used to insert Magseed contains a sterile wax. There is a very small potential for an allergic reaction to this. You should either contact the Breast Care Nurse or your GP.

Possible complications are similar to those of a biopsy which you may have had previously. These include pain, discomfort, bleeding, infection, and inflammation.

There is a small risk that when the Magseed is inserted, it doesn't lie in the abnormal tissue. When this happens, additional localisation techniques, such as a wire, may be used.

Further Information

We endeavour to provide an excellent service at all times, but should you have any concerns please, in the first instance, raise these with the Matron, Senior Nurse or Manager on duty.

If they cannot resolve your concern, please contact our Patient Experience Team on 01932 723553 or email asp-tr.patient.advice@nhs.net. If you remain concerned, the team can also advise upon how to make a formal complaint.

Author: Dr Y Chen, Dr JR Glover, Dr J Hibbert, Dr D Tzias

Version: 2

Published: Dec 2023

Department: Imaging

Review: Dec 2025